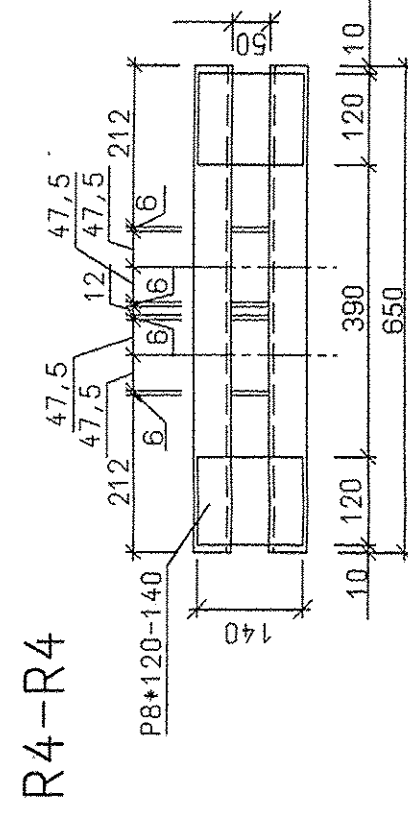
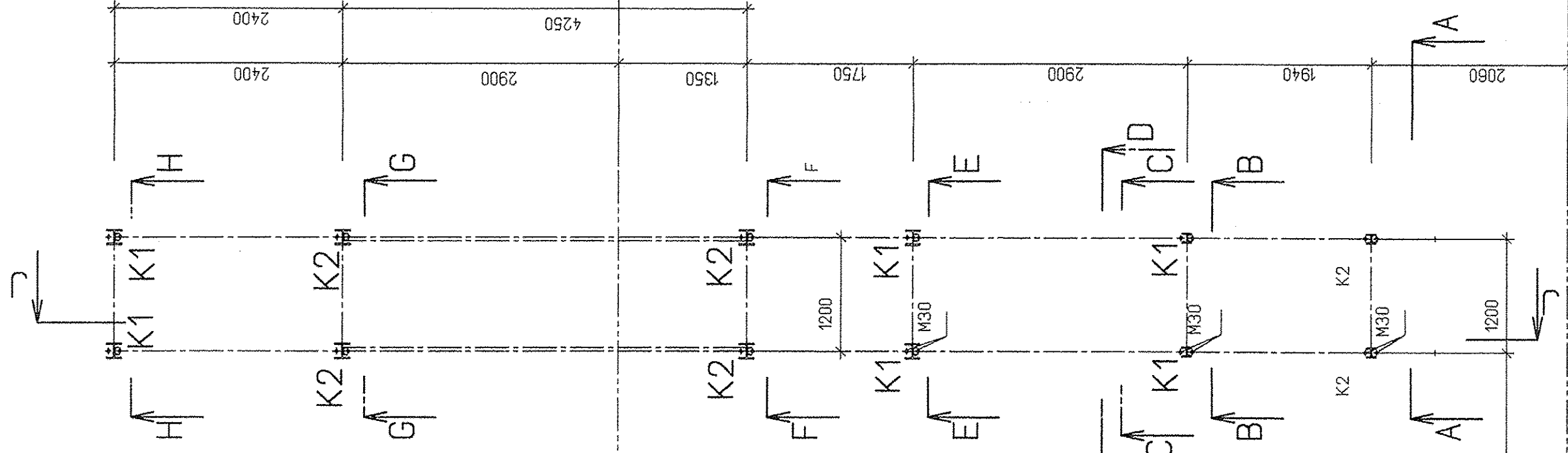


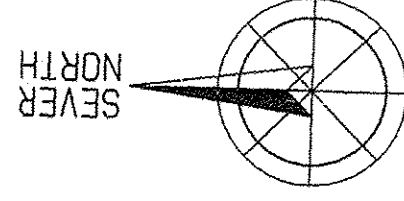
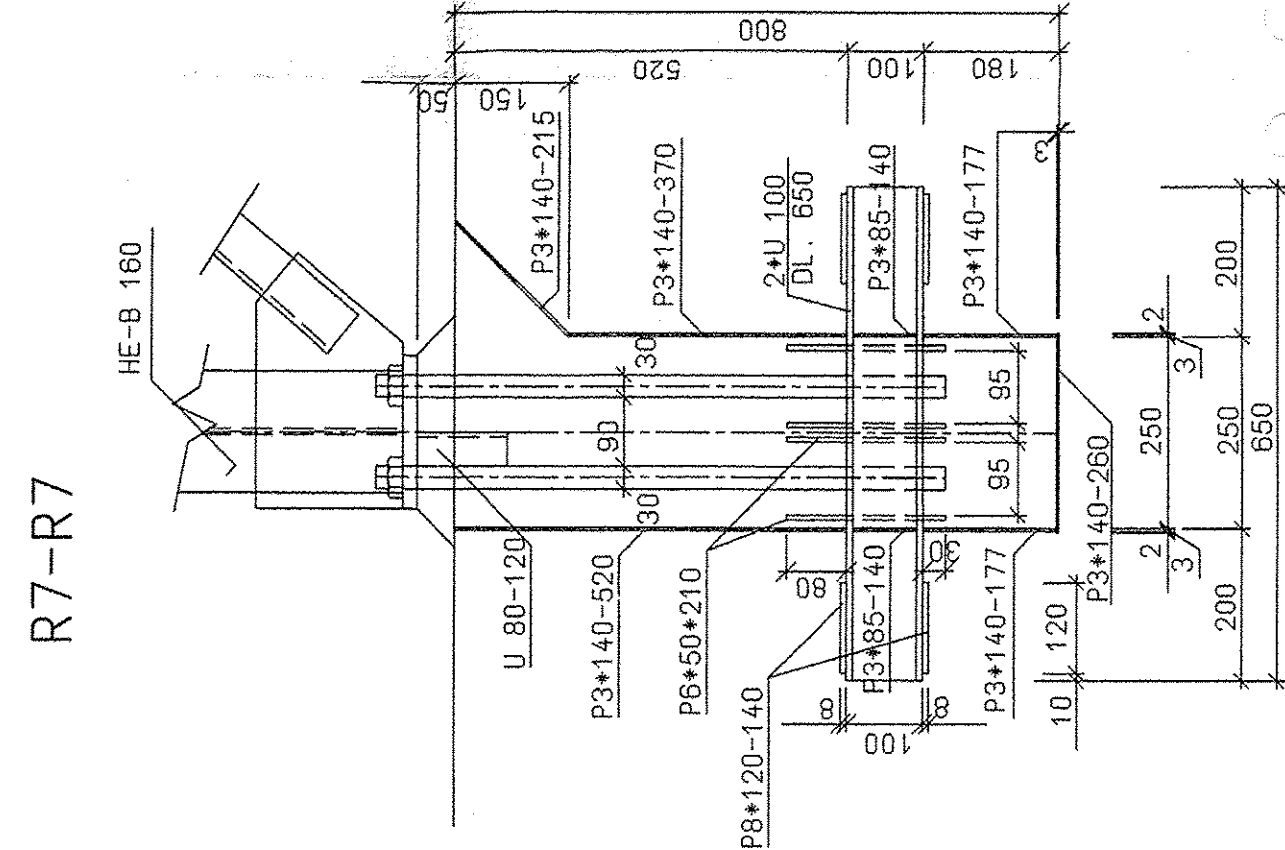
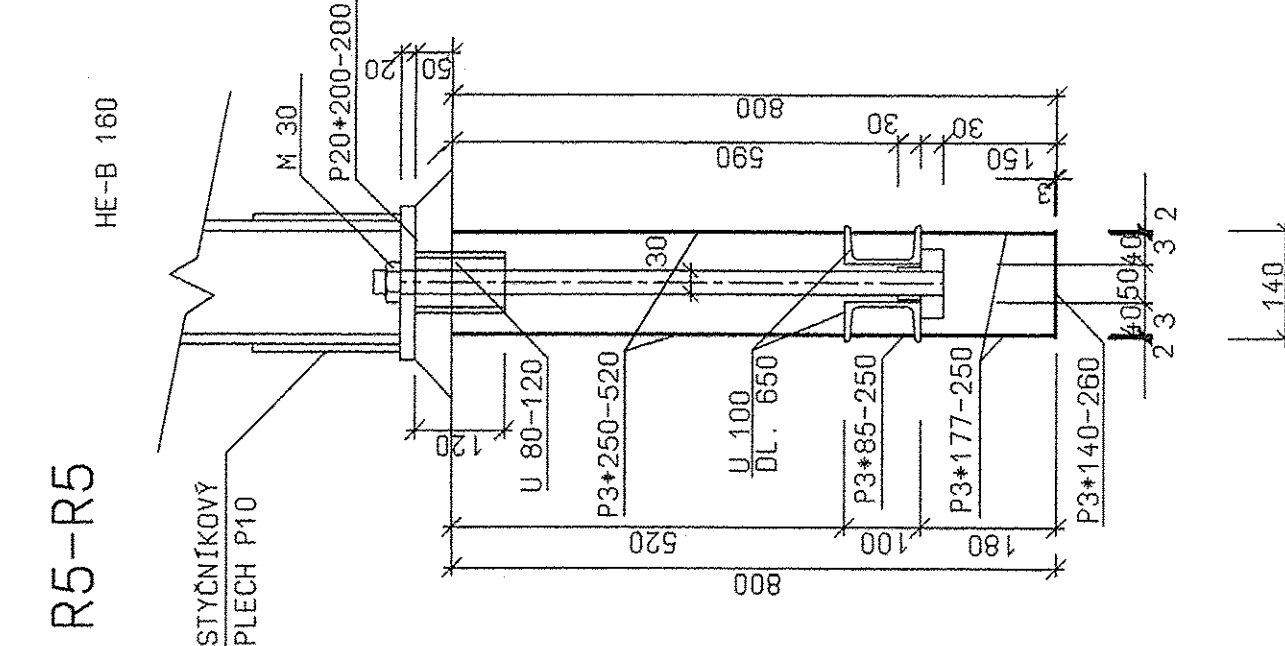
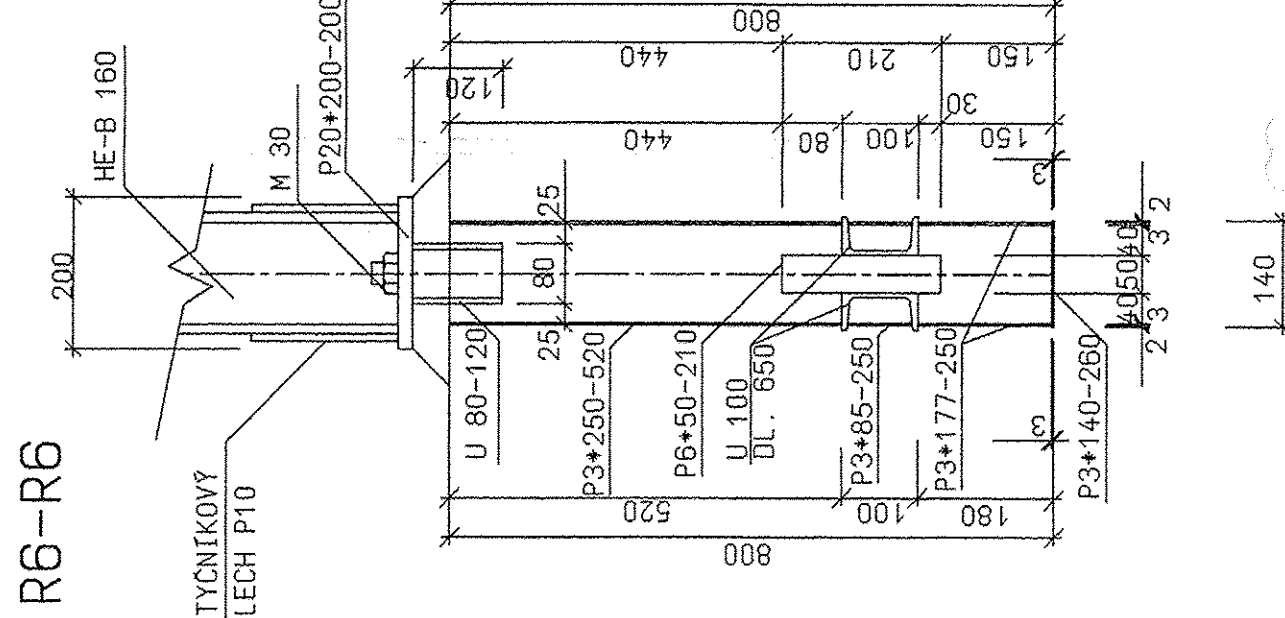
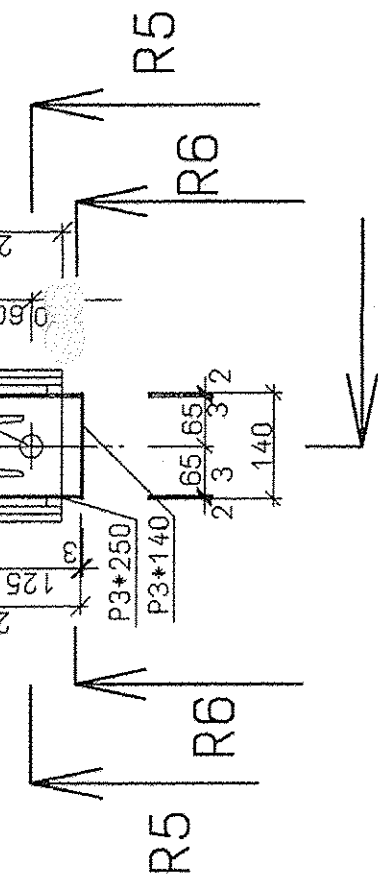
KOTVENIE
ANCHORING

KOTVENIE K2 (M1:10)
ANCHORING K2



KOTVENIE K1 / ANCHORING K1/
VÝKAZ MATERIÁLU/MATERIAL SPECIFICATION/

POČET KUSOV	PROFIL	DLŽKA KS/mm	DLŽKA CELKOM/mm	HMOTNOST KG/m	HMOTNOST SPOLU/KG	MATERIÁL
2	Ue..100	850	1300	10,6	14,0	11373
4	☞ PLECH P 6*50	210	0,84	2,4	2,00	11373
4	☞ PLECH P8*120	140	0,56	7,68	4,0	11373
1	☞ PLECH P3*140	800	0,80	3,36	3,0	11373
2	☞ PLECH P3*250	800	1,60	6,0	10,0	11373
2	☞ PLECH P3*150	150	0,30	3,60	1,0	11373
1	☞ PLECH P10 200	335	0,670	16,0	11,0	11373
CELKOM PRE 1 KS					48,0 KG	
HMOTNOST CELKOM PRE 6 KS					288,0 KG	
PRÍRAČKA ZA SPOJOVACÍ MATERIÁL / 5,26x / 15,14 KG						
HMOTNOST DIELCA					351,1 KG	



LEVELS

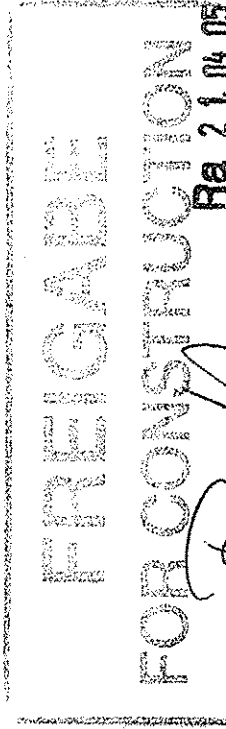
TOP OF INTERNAL ROADS: 225.00n.m.
HORNÁ GROVEŇ VNÚTORNÝCH CIEŤ 225.00n.m.

TOP OF FOUNDATION: 225,10m

HORNÁ GROVEŇ ZÁKLADOV 225,10m

BOTTOM OF STEEL STRUCTURE: 225,15m \pm 0,00

SPODNÁ ÚROVEŇ OK: 225,15m=±0,00





PROJEKT SKUTOČNĚC

STRENGTHS AND LIMITATIONS OF THE STUDY

$\pm 0,000=225,15$ m n.m. Jadran

PROJEKT PRE REALIZÁCIU STAVBY SPRACOVANÝ POD Z.Č. 3821 2.003, AS-10

	 AIR LIQUIDE		Job code: K700101	Scale 1:25	Original format DIN A2
	Rev. :	Date :	Name :	Sheet: 010 of 010 Sheets	Rev. :
Title: UNIT 7 - FRONT END S03 PREPARA VZUCHU S03 AIR PREPARATION KOTVENIE K2 / ANCHORING K2/		Drawing No.: 792.87456		0	
Replaces: 79		Replaced by: 79			